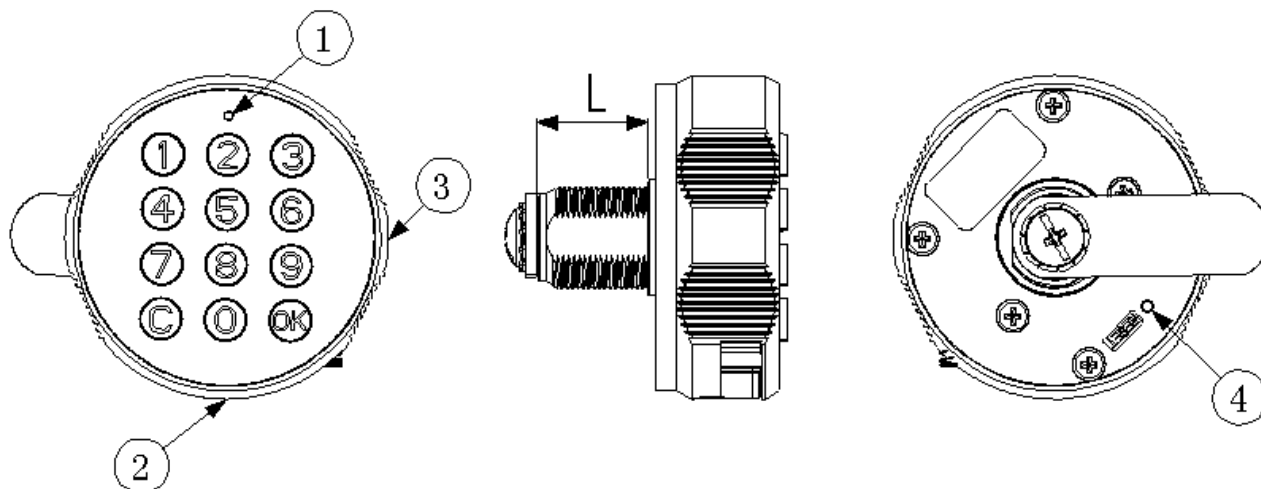


User Manual for

Electronic Key Pad Cam Lock

Product introduction:



1. Indicator light.
2. Battery compartment, use Cr2450 Button Cell Battery.
3. Type-C port used for emergency charging.
4. Reset button used for restore factory settings.

Use mode switching:

1. The product has two modes of use, public and private, the factory defaults to public mode, you can switch the mode through the tool or management password;
2. Switching with the tool: Insert a pin through the reset hole on the back of the product into the reset button and follow the instructions below (the button is switched cyclically)
 - 1) Private Mode: Press and hold for more than 3 seconds, 'beep' will sound once, indicating switching to private mode;
 - 2) Public Mode: Press and hold for more than 3 seconds, 'beep' will sound 2 times, it means switch to public mode;
 - 3) Switching the usage mode by reset button, both the management password and user password are restored to the initial password;
3. Switching using the administrator password: Entering commands via the keypad
 - 1) Private mode: Management password + C+C+C+C+1+OK, 'beep' 1 sound, indicates switching to private mode;
 - 2) Public mode: Management password + C + C + C + C + 2 + OK, 'beep' sound 2 times, said to switch to the public mode
 - 3) Switching the usage mode through the management password, the management password remains unchanged and the user password restores the initial password.

Operating instructions

1. Change admin password: Initial admin password 112233, admin password is unlimited in number of digits, entered via keyboard:
The original management password + C + C + new management password + OK, 'beep' short 1 sound, indicates that the change is successful.

For example: Change the admin password from 112233 to 1234, input 0, 10, 10, 20, 20, 30, 30, C0, C0, 10, 20, 30, 40, 0K, password is changed successfully

2. Private mode: initial password is 123, unlimited password length
 - 1) Unlocking: password + OK, 'Tick' long sound indicates success, turn the knob to unlock position within 3 seconds to complete unlocking.
 - 2) Locking: Just turn the knob to the OFF LOCK position at any time.
 - 3) Change password: original password + C + new password + OK, one long beep sound indicates successful password change.

For example: Change the initial password from 123 to 2345, input 0, 10, 20, 30, C0, 20, 30, 40, 50, 0K, password change successfully.

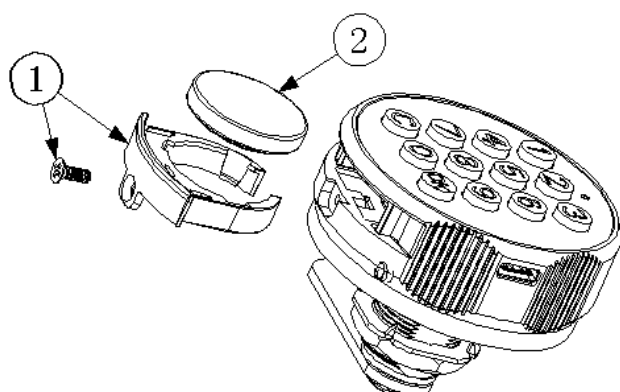
3. Public Mode: Initial password is 123, password length is 3 digits at least.
 - 1) In Public mode, it requires a new temporary code to be entered each time for locking, while it requires the same temporary code is used to unlock the door when it is locked.
 - 2) Unlock: Input the password + OK, 'Tick' long sound indicates success, turn the knob to unlock position within 3 seconds, the temporary password is invalid after unlocking.
 - 3) Close the lock: In the unlocked state, input the password + OK, 'beep' long sound indicates success, turn the knob to close the lock position within 3 seconds, and at the same time, the temporary password takes effect, the user needs to remember the password.

For example: Set the temporary password to 3456, input 0, 30, 40, 50, 60, 0K, temporary password set successfully.

4. Note: If the password entry process is interrupted for more than 12 seconds or the C key is pressed, the previously entered password digits will be deleted.
5. When the user forgets his/her password, he/she can unlock the door by keying in his/her administrative password + C + OK. After using the management password to unlock the door, the original user password is restored to the initial password of 123, and the current mode of use remains unchanged.

For example: Use admin code 1234 to unlock the door, input 0, 10, 20, 30, 40, C0, 0K

Battery Replacement

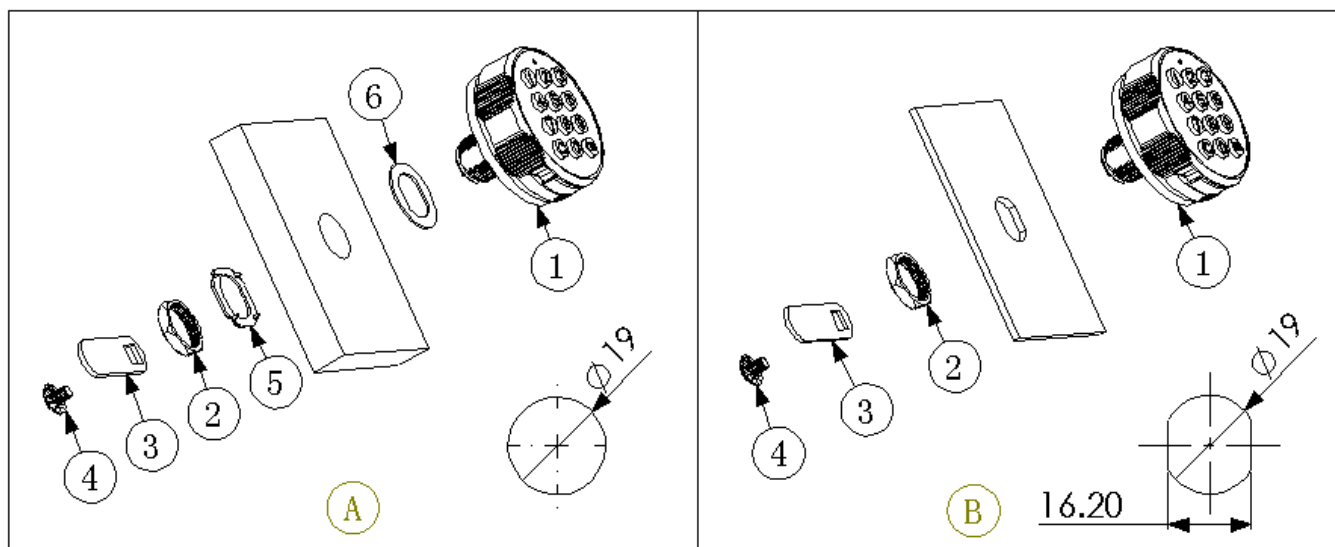


1. Use a screwdriver to remove the battery compartment screws and take out the battery compartment.
2. Replace with new battery, battery model is Cr2450.
3. Install the battery compartment into the lock and tighten the screws.

Common troubleshooting

Fault phenomenon	Main reasons	Solutions
After entering the code, it beeps 2 times but does not unlock the door.	Wrong password	Input correct password
Continuous ringing sound lasts 1 minute	Entering the wrong password too many times	Input correct password
After entering the code to unlock the door, there will be 3 short beeps continuously.	Low battery voltage	Replace new battery asap
Continuous beeping	Battery is about to run out.	Replace the battery as soon as possible or use USB port for charging.

Installation: A wooden door installation B steel door installation



Precautions:

1. Battery specifications: Cr2450, battery life: 6000 times above
2. Working temperatures: -10℃~50℃;
3. Please remember the administration password and user password, you can only use the reset button to restore the factory settings if you forget both passwords.